

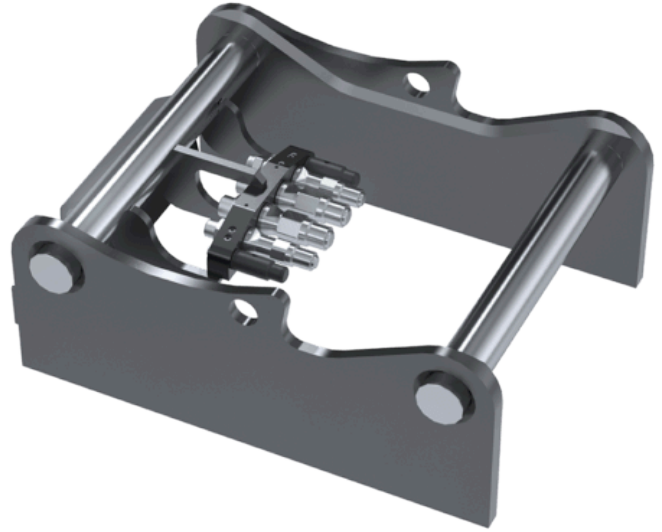
# Weld-on adaptors SQ

## Adaptors 3-70 tonnes

Steelwrist offers the solution to ensure the right tool is used for the job. With the SQ technology you change work tools in seconds, even between work tools bought from different manufacturers.

### For easy conversion of any hydraulically powered work tool to SQ (OS®)

The Weld-on SQ adaptors are available in a high and low model in order to fit different types of hydraulic work tools and convert them to SQ. With the weldable design it is possible to create an optimized integration by cutting the side plates to match the attachment it will be integrated with, this can reduce both weight and building height. The male couplings in the SQ adaptor are equipped with Qplus™ technology for higher flow, more uptime and improved serviceability.



### Steelwrist SQ technology and the Open-S (OS®) standard

With the SQ auto connection system for quick couplers and tiltrotators it is possible to connect both hydraulics and electrical signals directly when coupling the work tool. Steelwrist SQ automatic couplers are in compliance with Open-S (OS®) – the open industry standard for automatic couplers for excavators. This means that the SQ auto connection system is designed to also connect to other brands using the same type of oil connection system, following the Open-S (OS®) standard. By using Steelwrist SQ adaptors you can convert any hydraulic work tool or attachment to become Open-S compliant.

By using Steelwrist SQ adaptors you can convert any work tool or attachment to Open-S.

### Different number of couplings depending on the type of work tool

All SQ adaptors can be configured in multiple ways all depending on what type of work tool and the number of functions that are used. See the table below for the different configurations that are available by coupler size.

### Open-S V14 Electrical connector (option for SQ45 to SQ90)

The Open-S V14 electrical connector is a robust fourteen pole connector specially made for SQ couplers and work tool applications. It can be retrofitted in existing SQ type couplers and work tools. The Open-S V14 electrical connector can be used by all Open-S Alliance members, and is for MiC 4.0-equipped excavators the agreed standard.

Regarding interchangeability between Steelwrist SQ and other brands of fully hydraulic quick couplers and work tools, see link.

## 🔧 Measurement

Weld-on adaptors SQ	SQ50	SQ60-4	SQ60-5	SQ65	SQ70	SQ70/55	SQ80	SQ90
Machine weight [ton]	5-13	12-20	12-20	14-22	18-33	18-33	25-43	40-75
Weight from [kg]								
Height [mm]		155	155	169	220	190	248	235
Length [mm]		600	600	661	741	741	837	950
Pin distance [cc-measure ] [mm]		480,25	480,25	530,25	600,25	600,25	670,25	750,25
Pin diameter [mm]	50	60	60	65	70	70	80	90

Weld-on adaptors SQ – Long	SQ50	SQ60-4	SQ60-5	SQ65	SQ70	SQ70/55	SQ80	SQ90
Machine weight [ton]	5-13	12-20	12-20	14-22	18-33	18-33	25-43	40-75
Weight from [kg]								
Height [mm]	128	105	105	208,5	255	225	238	273
Length [mm]	520,75	797	797	862	940	937	837	950
Pin distance [cc-measure ] [mm]	430,25	480,25	480,25	530,25	600,25	600,25	670,25	750,25
Pin diameter [mm]	50	60	60	65	70	70	80	90

## ⚙️ Technical specification

### EXAMPLE OF NUMBER OF COUPLINGS DEPENDING ON TYPE OF WORK TOOL\* ○ Required ● Not Required

SQ size	Total no of Couplings	Coupling sizes	2 functions	2 functions + drain line	1 function + drain line	1 function
SQ40	4	4x7/16"	●●●●	—	●●●●	○●○●
SQ50	5	2x3/8", 3x1/2"	●●●●○	●●●●●	○●●●●	○●●●●
SQ60-4	4	2x3/4", 2x1/2"	●●●●	—	●●●●○	○●●●○
SQ60-5	5	2x3/4", 2x3/8", 1x1/2"	●●●●○	●●●●●	○●●●●	○●●●●
SQ65	5	2x3/4", 1x1/2", 1x3/4"	●●●●○	●●●●●	○●●●●	○●●●●
SQ70	5	2x1", 2x1/2", 1x 3/4"	●●●●○	●●●●●	○●●●●	○●●●●
SQ70/55	6	2x1", 2x1/2", 2x3/4"	●●●●○●	●●●●●●	○●●●●●	○●●●●●
SQ80	6	2x1", 2x1/2", 2x3/4"	●●●●○●	●●●●●●	○●●●●●	○●●●●●
SQ90	9	4x1", 3x1/2", 1x3/4", 1x3/8"	●●●●○●●	●●●●●●●	○●●●●●●	○●●●●●●

\* Please verify with your tool manufacturer as the need of connections can vary depending on manufacturer and market standards.