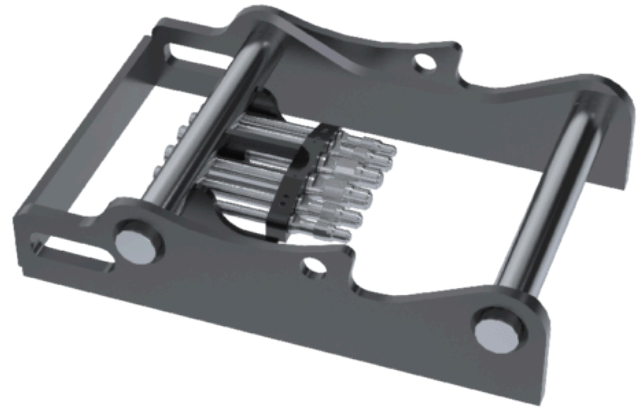


SQ80 Weld on adaptor – low

Weld on SQ-adaptor 28-40 tonnes

Weldable adaptor for easy conversion of any hydraulically powered work tool to SQ. (Regarding interchangeability between the SQ standard and other brands of fully hydraulic quick couplers and work tools, see link.) Male couplings in SQ adaptor equipped with Qplus technology for higher flow, more uptime and improved serviceability.



Measurement

Type

Quick coupler

Pin distance
(cc-measure)
(inch) G

Pin distance
(cc-measure)
(mm) G

Height (inch) H

Shaft diameter
dipper (inch) I

Length (inch) J

Width (inch) K