

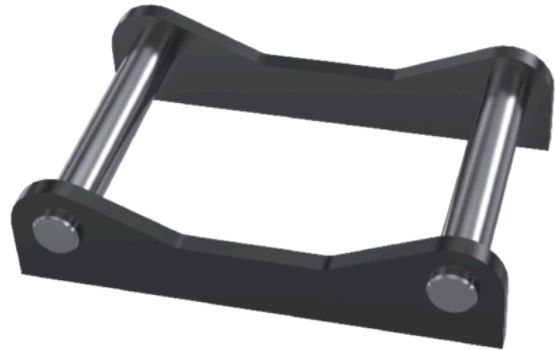
S70 Weld on adaptor

Weld on S-adaptor 18-32 tonnes



Connecting work tools efficiently

Connecting the tiltrotator or work tools in an efficient way is always a good idea. Regardless if you are looking to safeguard proper maintenance by connecting to a central lubrication system, or if you are chasing seconds when changing work tools we have the solution that you need. Weldable adaptor for easy conversion of any work tool to Symmetrical standard.



Measurement

Type	S70
Quick coupler	S70
Pin distance (cc-measure) (inch) G	600,5
Pin distance (cc-measure) (mm) G	600,5
Height (inch) H	4.53
Shaft diameter dipper (inch) I	2.76
Length (inch) J	9.84
Width (inch) K	17.80