

GEOfit

Accessory



GEOfit – Three functions in one

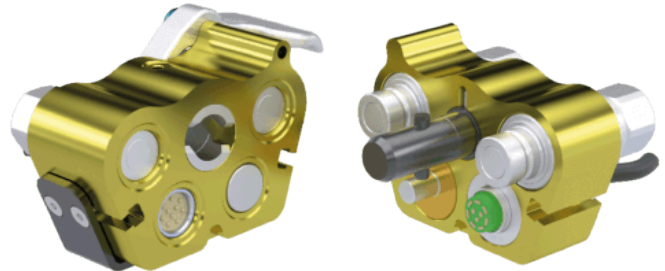
GEOfit (Grease, Electricity, Oil) connects the hydraulics, electrics and central lubrication to your excavator with a simple connection

Easy to use

The GEOfit coupler is easy to use. In a few seconds you can connect or disconnect your tiltrotator from the excavator.

Compact solution

GEOfit is the most compact solution and the only one that has central lubrication, electronics and hydraulics in the same connection. Thanks to the transverse handle, nothing that stands out and can get stuck with other things as you are using the excavator. The handle is designed so that you can not pinch your fingers during open/close and is a big advantage compared to competing products.



Pressure relieved couplings

GEOfit is equipped with integrated pressure relieved couplings which makes it possible to connect with residual pressure in the system.

Built-in Safety

When you want to remove the tiltrotator it is important that only the right coupler can be unlocked in the case that you have a “sandwich” solution, ie. Quick Coupler and Tiltrotator in sandwich. An additional safety level is achieved as the GEOfits dust protection contains the safety plug. This makes it impossible to disconnect the “wrong” coupler by mistake.

Technical specification

Specification hydraulic coupling 1/2 inch and 3/4 inch

Max operating pressure	35 MPa (350 Bar)
-------------------------------	------------------

Min burst pressure	120 MPa
---------------------------	---------

Temperature range	-30°C to +100°C
--------------------------	-----------------

Material	Galvanized steel, anodized aluminum, zinc, brass
-----------------	--

Sealing materials	Nitril (NBR)
--------------------------	--------------

Specification electrical connection

Number of poles	10
------------------------	----

Adjustment poles to control system	XControl G2
---	-------------

Temperature range	-55°C to +125°C
--------------------------	-----------------

Max current, at 20°C	22 A
-----------------------------	------

Security barrier	Built in dust protection
-------------------------	--------------------------