

Fixed brush FB1800

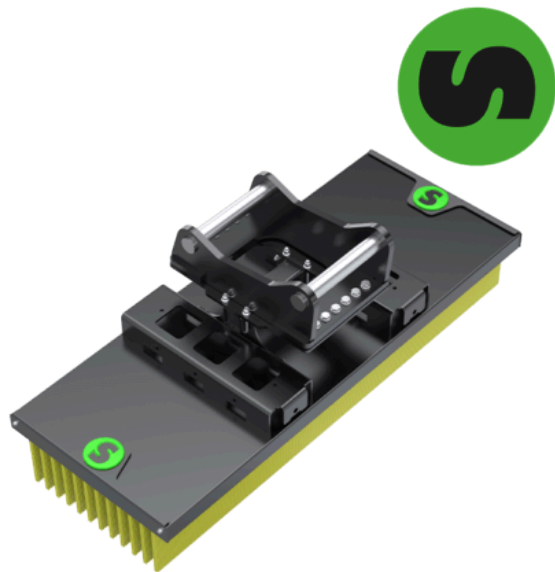
Sweeper 2-20 tonnes

A multipurpose brush for excavators

The mechanical fixed brush has a variety of uses and is adapted for excavators. It can easily be used under the tiltrotator.

With the fixed brush you can sweep gravel, remove snow from bus stops and barns or sweep near traffic without risking stone chips.

A robust design, pallet fork bracket as standard and two types of bristles for best results.



Measurement

Type	FB1800
Quick coupler	S40, S45, S50, S60, S65, S70
Width (mm)	1800
Weight from (kg)	230