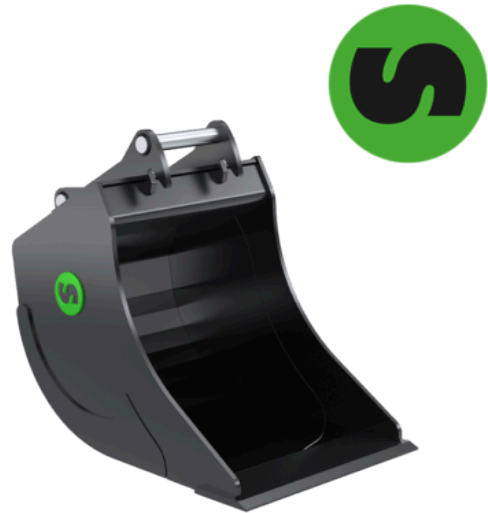


# DB9

## Digging bucket 8-12 tonnes

Steelwrist's digging bucket is designed to withstand tougher jobs. The bucket is characterized by a progressive radius which allows the cutting edge to penetrate the material without interference from the bottom. The bucket is available with or without teeth. Tooth System CAT.

On the larger buckets (S60 and upwards) oversized pipes are used to increase the stiffness of the buckets, while the sheet metal truss structure used on the smaller buckets to keep the weight down.



### Technical specification

<b>Article</b>	101092	101094	101096
<b>Machine weight (tonnes)</b>	8-12	8-12	8-13
<b>Quick coupler</b>	S50	S50	S50
<b>Tiltrotator</b>	X12	X12	X12
<b>Volume (l)</b>	210	260	350
<b>Width (mm)</b>	600	700	900
<b>Weight (kg)</b>	205	225	275
<b>Cutting edge (mm)</b>	20		