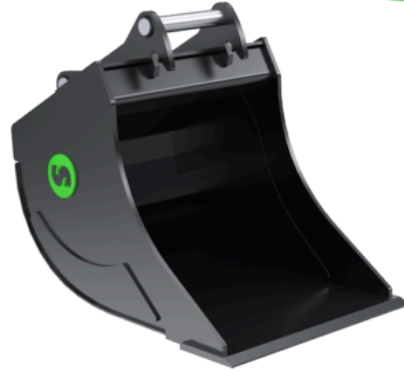


# DB6

## Digging bucket 5-8 tonnes

Steelwrist's digging bucket is designed to withstand tougher jobs. The bucket is characterized by a progressive radius which allows the cutting edge to penetrate the material without interference from the bottom. The bucket is available with or without teeth. Tooth System CAT.

On the larger buckets (S60 and upwards) oversized pipes are used to increase the stiffness of the buckets, while the sheet metal truss structure used on the smaller buckets to keep the weight down.



### Technical specification

<b>Article</b>	101077	101079	101081
<b>Machine weight (tonnes)</b>	5-8	5-8	5-8
<b>Quick coupler</b>	S50	S50	S50
<b>Tiltrotator</b>	X07	X07	X07
<b>Volume (l)</b>	170	210	280
<b>Width (mm)</b>	600	700	900
<b>Weight (kg)</b>	135	150	180
<b>Cutting edge (mm)</b>	20	20	