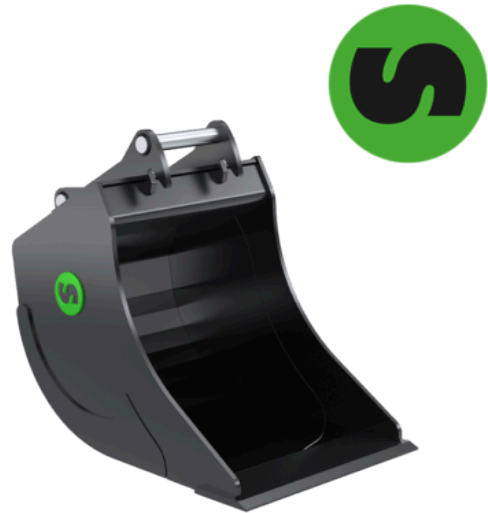


# DB9

## Digging bucket 8-12 tonnes

Steelwrist's digging bucket is designed to withstand tougher jobs. The bucket is characterized by a progressive radius which allows the cutting edge to penetrate the material without interference from the bottom. The bucket is available with or without teeth. Tooth System CAT.

On the larger buckets (S60 and upwards) oversized pipes are used to increase the stiffness of the buckets, while the sheet metal truss structure used on the smaller buckets to keep the weight down.



### Technical specification

<b>Article</b>	101083	101085	101087
<b>Machine weight (lb)</b>	17600-26400	17600-26400	17600-26400
<b>Quick coupler</b>	S45	S45	S45
<b>Tiltrotator</b>	X12	X12	X12
<b>Volume (yd<sup>3</sup>)</b>	0.21	0.27	0.34
<b>Width (inch)</b>	17.72	23.62	27.56
<b>Weight (lb)</b>	396	440	495
<b>Cutting edge (inch)</b>	0.79	0.79	