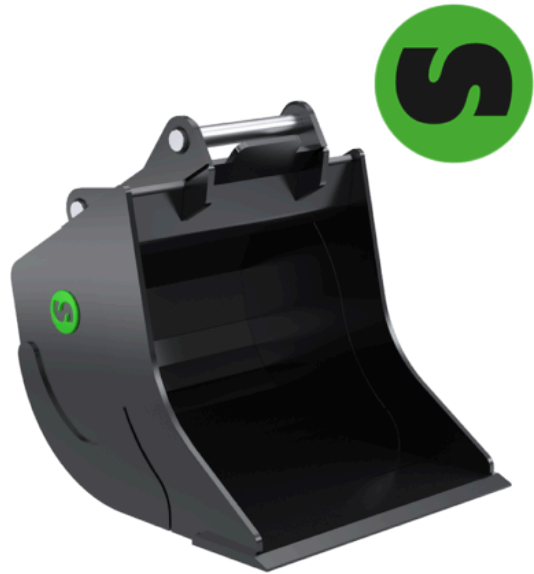


# DB15

## Digging bucket 15-16 ton

Steelwrists digging bucket is designed to withstand tougher jobs. The bucket is characterized by a progressive radius which allows the cutting edge to penetrate the material without interference from the bottom. The bucket is available with or without teeth. Tooth System CAT.

On the larger buckets (S60 and upwards) oversized pipes are used to increase the stiffness of the buckets, while the sheet metal truss structure used on the smaller buckets to keep the weight down.



### Measurement

<b>Article</b>	101125	101127
<b>Machine weight (tonnes)</b>	15-16	15-16
<b>Quick coupler</b>	S60	S65
<b>Tiltrotator</b>	X18	X18
<b>Volume (l)</b>	590	590
<b>Width (mm)</b>	1000	1000
<b>Weight (kg)</b>	505	515
<b>Cutting edge (mm)</b>	30	30