

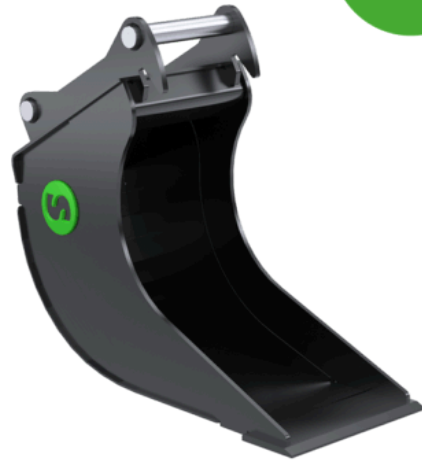
CB6

Cable bucket 5-8 ton

Cable bucket when you need to be surgical

Steelwrist cable bucket is high from cutting edge to attachment bracket which allows you to properly enter the trench without interference with the tiltrotator. To avoid problems the tiltrotator gripper unit has extremely robust cylinders protection.

On the larger buckets (S60 and upwards) oversized pipes are used to increase the stiffness of the buckets, while the sheet metal truss structure used on the smaller buckets keep the weight down.



Technical specification

Article	101165	101169	101170
Machine weight (tonnes)	5-8	5-8	5-8
Quick coupler	S40	S45	S50
Tiltrotator	X06	X07	X07
Volume (l)	100	100	100
Width (mm)	400	400	400
Weight (kg)	95	110	110
Cutting edge (mm)	16	16	16