

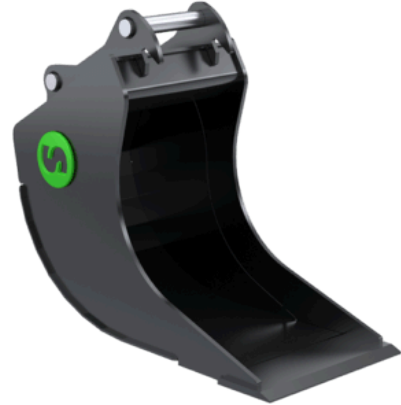
CB5

Cable bucket 4-6 tonnes

Cable bucket when you need to be surgical

Steelwrist cable bucket is high from cutting edge to attachment bracket which allows you to properly enter the trench without interference with the tiltrotator. To avoid problems the tiltrotator gripper unit has extremely robust cylinders protection.

On the larger buckets (S60 and upwards) oversized pipes are used to increase the stiffness of the buckets, while the sheet metal truss structure used on the smaller buckets keep the weight down.



⚙️ Technical specification

Article	101160	101162	101163
Machine weight (tonnes)	4-6	4-6	4-6
Quick coupler	S40	S40	S40
Tiltrotator	X04, X06	X04, X06	X04, X06
Volume (l)	60	90	100
Width (mm)	300	400	450
Weight (kg)	70	80	85
Cutting edge (mm)	16		