

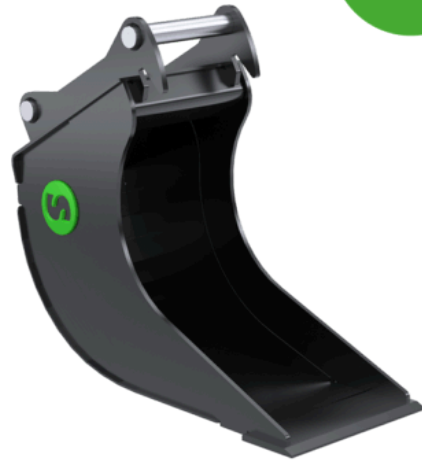
# CB6

## Cable bucket 5-8 ton

### Cable bucket when you need to be surgical

Steelwrist cable bucket is high from cutting edge to attachment bracket which allows you to properly enter the trench without interference with the tiltrotator. To avoid problems the tiltrotator gripper unit has extremely robust cylinders protection.

On the larger buckets (S60 and upwards) oversized pipes are used to increase the stiffness of the buckets, while the sheet metal truss structure used on the smaller buckets keep the weight down.



#### Technical specification

<b>Article</b>	101171	101173	101174
<b>Machine weight (tonnes)</b>	5-8	5-8	5-8
<b>Quick coupler</b>	S50	HS03	HS08
<b>Tiltrotator</b>	X06	X07	X07
<b>Volume (l)</b>	110	100	100
<b>Width (mm)</b>	450	400	400
<b>Weight (kg)</b>	115	100	125
<b>Cutting edge (mm)</b>	16	16	16